

Sekkei Systems

from Kaashni



About Us

Established in 2016 by Mr. Prakashchand Bandamutha, Kaashni Hardware has swiftly become a leading name in the architectural hardware industry. With over 25 years of experience, we take pride in offering an extensive range of top-quality aluminium products and solutions for both industrial and domestic customers.

As one of India's largest distributors of Incaux hardware, we deliver cutting-edge technology and innovative solutions to meet the diverse needs of our valued customers. Our strategic ventures, such as Sekkei Systems, allow us to provide a comprehensive array of products, including sliding door systems, glass partitions, door closers, floor springs, and other hardware solutions, tailored to cater to our clients' unique requirements.

At Kaashni Hardware, we are committed to excellence in every aspect of our business. We embrace sustainability and eco-friendly practices, ensuring our products help reduce carbon footprint while maintaining top-notch functionality. Our dedicated team of highly skilled professionals offers exceptional customer service, providing end-to-end solutions from initial consultation and design to seamless installation and post-installation support.

Our portfolio boasts successful projects across diverse industries, including residential, commercial, and corporate spaces. We continually push the boundaries of innovation, striving to exceed expectations and deliver the best results possible.

As we continue to grow and expand our horizons, our vision remains clear: to be the go-to provider of architectural hardware solutions in India. When it comes to elevating spaces and redefining projects, Kaashni Hardware is your trusted partner.

Unlock boundless space and versatility with Slim Frame Sliding Folding Doors.

Sliding Folding Doors

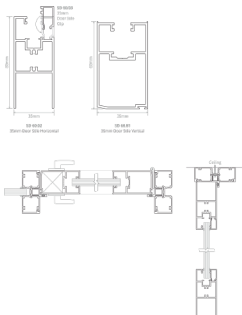


Welcome to the world of innovation and versatility with Slim Frame Sliding Folding Doors! These cutting-edge doors are revolutionizing the way we utilize space, offering a seamless blend of functionality and aesthetics for both residential and commercial settings. The top-hung design and absence of a bottom channel make these doors excellent for creating partitions when required and effortlessly expanding space, providing endless possibilities for architectural exploration.

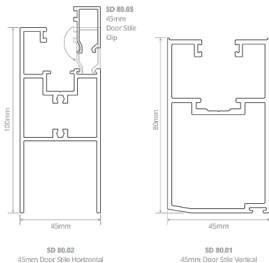
With the flexibility to be installed in 1+1 doors, 1+2 doors, 1+3 doors, or 1+4 doors configurations, these doors adapt to various spatial needs with ease. From transforming balconies into serene retreats to connecting grand auditoriums or organizing versatile classrooms, their versatility knows no bounds.

Beyond their sleek and modern appearance, Slim Frame Sliding Folding Doors are engineered for durability, smooth operation, and enhanced security, ensuring a reliable and long-lasting performance. Embrace the innovative spirit of Slim Frame Sliding Folding Doors to redefine your living and working spaces, harmonizing functionality and style like never before, and unlock the true potential of your environment. Step into a world of endless possibilities with these extraordinary doors, where design meets functionality in perfect harmony.

Stile Door

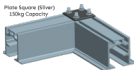


- ▶ Easy to assemble 35mm and 45mm Thick Aluminium Doors.
- ▶ Supplied with specially developed brackets, the doors can be assembled on site in a matter of few minutes.
- ▶ The doors are designed to take up to 55kgs of load.
- ▶ Supplied in ready to assemble kit.
- ▶ **Maximum door size:** 2100mm X 1000mm with 3 hinges and 2700mm X 920mm with 4 hinges.

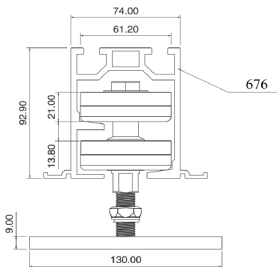
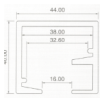


Sliding Folding Hardware

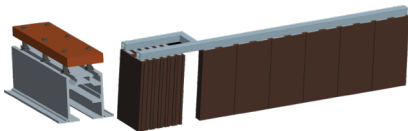
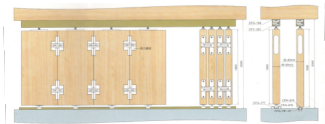
Plate Square (Silver)
130kg Capacity



Top Channel



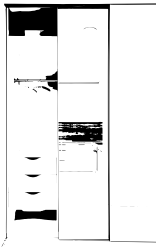
Channel Aluminium





KAASHNI HARDWARESS

Sekkei is an architectural design philosophy that originates from traditional Japanese building practices. Rooted in principles of simplicity, balance, and respect for nature, Sekkei aims to create spaces that harmonize with their surroundings, inspire a sense of tranquility, and optimize functionality. The term "Sekkei" itself translates to "plan" or "design," and its essence lies in meticulous planning and precision, where every aspect of a structure is carefully considered to achieve an ideal blend of form and function.



Embark on a visual journey of inspiration by scanning the QR code! Prepare to be captivated as you delve into a gallery of our exceptional creations. From innovative furniture hardware solutions to awe-inspiring interior transformations, this QR code leads you to a realm of possibilities. Discover firsthand the impeccable craftsmanship, sleek designs, and transformative power that define our work.

Kaashni Hardwaress, embraced the Sekkei approach and introduced it to modern design with a touch of contemporary flair. By combining the timeless wisdom of Japanese architecture with innovative techniques and materials, We have been able to craft spaces that not only showcase architectural excellence but also evoke a profound emotional connection with their occupants. The integration of Sekkei principles in their projects has allowed us to create environments that foster a sense of calmness and balance, offering a refuge from the fast-paced world outside while simultaneously celebrating the beauty of simplicity and natural elements.