

Sekkei Systems

from Kaashni



About Us

Established in 2016 by Mr. Prakashchand Bandamutha, Kaashni Hardware has swiftly become a leading name in the architectural hardware industry. With over 25 years of experience, we take pride in offering an extensive range of top-quality aluminium products and solutions for both industrial and domestic customers.

As one of India's largest distributors of Indaux hardware, we deliver cutting-edge technology and innovative solutions to meet the diverse needs of our valued customers. Our strategic ventures, such as Sekkei Systems, allow us to provide a comprehensive array of products, including sliding door systems, glass partitions, door closers, floor springs, and other hardware solutions, tailored to cater to our clients' unique requirements.

At Kaashni Hardware, we are committed to excellence in every aspect of our business. We embrace sustainability and eco-friendly practices, ensuring our products help reduce carbon footprint while maintaining top-notch functionality. Our dedicated team of highly skilled professionals offers exceptional customer service, providing end-to-end solutions from initial consultation and design to seamless installation and post-installation support.

Our portfolio boasts successful projects across diverse industries, including residential, commercial, and corporate spaces. We continually push the boundaries of innovation, striving to exceed expectations and deliver the best results possible.

As we continue to grow and expand our horizons, our vision remains clear: to be the go-to provider of architectural hardware solutions in India. When it comes to elevating spaces and redefining projects, Kaashni Hardware is your trusted partner.

Seamless Glide, Timeless Design: Glass Sliding Wardrobes
Elevate Your Living Space.

Sliding Wardrobe

An Engineering Marvel for Optimal Storage Solutions. Precision-crafted with cutting-edge sliding systems, our wardrobes redefine efficiency and elegance. Customizable to unusual sizes, they seamlessly glide with effortless motion, maximizing floor-to-ceiling capacity for space optimization.

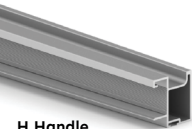
Featuring reinforced strength through advanced tempered glass panels, our wardrobes ensure durability and safety. With a wide range of colors and modern aesthetics, they effortlessly integrate into any interior design, elevating the overall appeal.

Experience the art of technical brilliance with Sekkei Sliding Wardrobes - where innovation and function converge, offering a seamless fusion of technology and style to transform your storage experience.

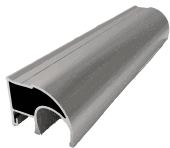
Eco-Friendly Materials
Unique Customization
Versatile Applications
Optimal Performance
Diverse Color Palette
Space Maximization
Smooth Integration
Reinforced Strength
Limitless Creativity
Space Optimization
Enhanced Security
Modern Aesthetics
Low Maintenance
Premium Quality
Effortless Glide
Natural Appeal
Accessibility
Swift Setup



Handle Designs



H Handle



C Handle

Frame Finishes (Glossy and Matte Available)



Black



Chrome



Champagne



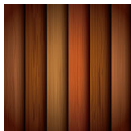
SS



Rose Gold



Gold

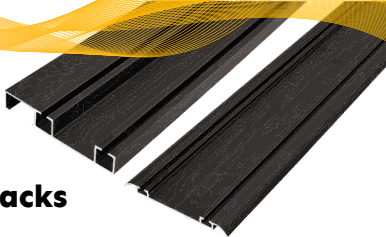


Wooden Finishes



Special colors

Sliding Tracks



17 mm
Sleek Track for H Handle



30mm
Track for C Handle



Lock Available

Anti-Dust Sliding Wheels



Soft Closing Systems



Sliding Door Desings



Gemini | Gemini + Mirror Series

Glass and Mirror exclusive to custom sized doors



Pure White



Bronze Mirror



Grey Mirror

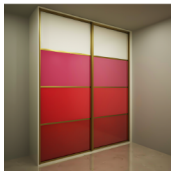


Dark Blue



Rose Gold Mirror

Virgo | Virgo+ Color Series



Cancer Laminate Series





Taurus | Taurus + Wallpaper/Fabric Sandwich Series



Pisces | Pisces+ MultiColor Series



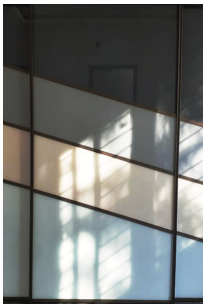
Capricorn | Capricorn+ Digital Print Series





Vertical Dividers

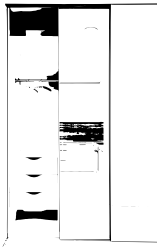
Cross Dividers





KAASHNI HARDWARESS

Sekkei is an architectural design philosophy that originates from traditional Japanese building practices. Rooted in principles of simplicity, balance, and respect for nature, Sekkei aims to create spaces that harmonize with their surroundings, inspire a sense of tranquility, and optimize functionality. The term "Sekkei" itself translates to "plan" or "design," and its essence lies in meticulous planning and precision, where every aspect of a structure is carefully considered to achieve an ideal blend of form and function.



Embark on a visual journey of inspiration by scanning the QR code! Prepare to be captivated as you delve into a gallery of our exceptional creations. From innovative furniture hardware solutions to awe-inspiring interior transformations, this QR code leads you to a realm of possibilities. Discover firsthand the impeccable craftsmanship, sleek designs, and transformative power that define our work.

Kaashni Hardwaress, embraced the Sekkei approach and introduced it to modern design with a touch of contemporary flair. By combining the timeless wisdom of Japanese architecture with innovative techniques and materials, We have been able to craft spaces that not only showcase architectural excellence but also evoke a profound emotional connection with their occupants. The integration of Sekkei principles in their projects has allowed us to create environments that foster a sense of calmness and balance, offering a refuge from the fast-paced world outside while simultaneously celebrating the beauty of simplicity and natural elements.